

# GRASSLAND PRO HARROW

GP 600 M2

THE VERSATILE



Version: 1.0 EN / Item no.: 00210-3-817

AMBITION. PASSION. VISION.



# HOW IT WORKS

## PRODUCT DESCRIPTION

Successful grassland management is the basis for good forage quality and high yields. The GP 600 M2 Grassland Pro Harrow is characterised by a short and compact design and is particularly suitable for larger areas and for cross-farm operations. With the Grassland Pro Harrow, you can complete all the steps of grassland maintenance with just one pass. The harrow and roller can be used in combination. The GP 600 M2 has 2 to 4 rows of tines. The unique combination of strong 12 mm and 8 mm tines ensures optimum tillage of the sward. Due to the numerous adjustment possibilities, the GP 600 M2 achieves optimal results.



## FRAME CONSTRUCTION AND FOLDING

The construction or folding of the mould field is in two parts. Both units can adapt to the ground conditions during travel and are each guided safely in depth by the lower links and the trailing roller. The roller segments are arranged in a line on the machine to enable turning and manoeuvring „on the roller“. The frame has been designed to accommodate APV Pneumatic Seeders with a capacity of up to 800 litres.



## ADJUSTMENT OPTIONS

The GP 600 M2 offers a wide range of adjustment options. For example, the height of the levelling plate can be adjusted via a crank. The working intensity of the tines is adjusted without tools and mechanically via the hole pattern. The working depth of the tines is adjusted via hydraulic cylinders/hydroclips on the roller or feeler wheels. Additional fine adjustment of the working depth/harrow intensity during travel can be adjusted via the lift height of the lower links. An intensive setting for harrowing and aeration or for gentle grassland rehabilitation is available.



# ADVANTAGES

## EXACT

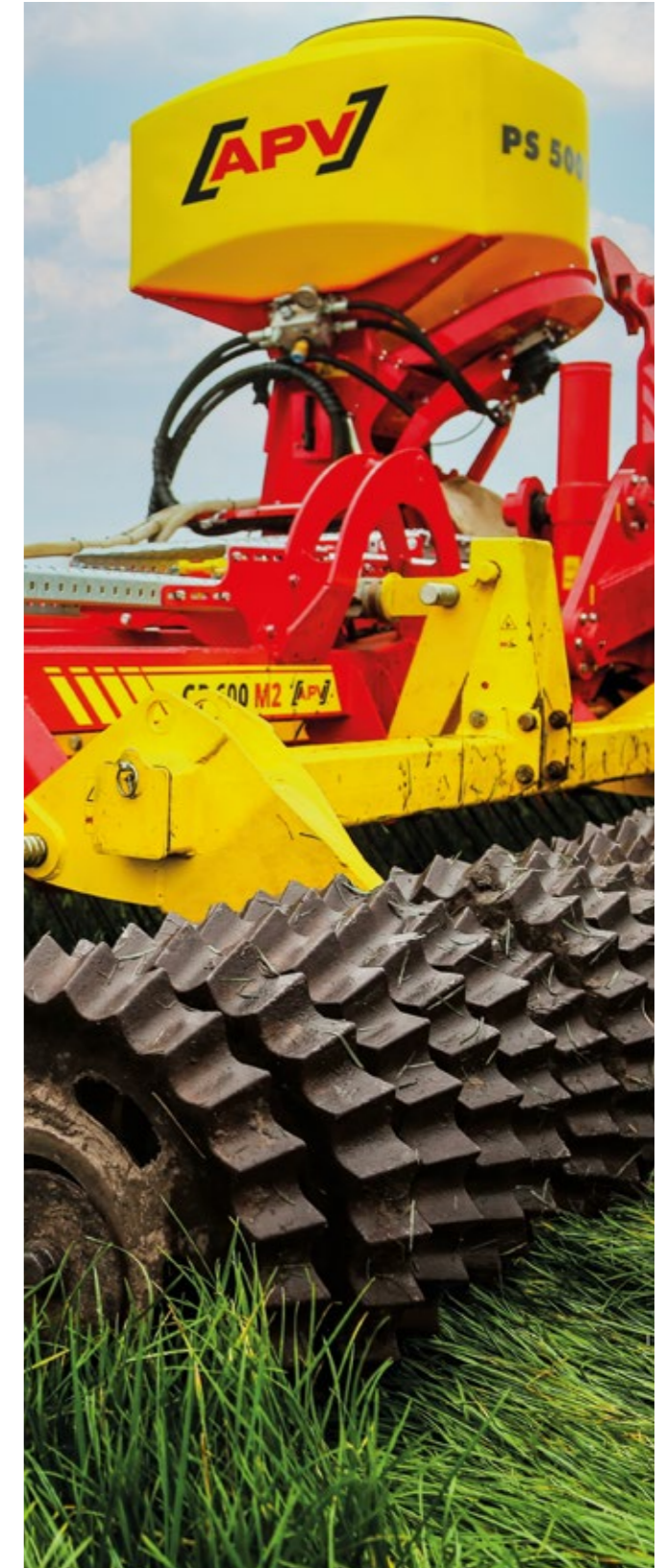
- Intensity of the harrow rows individually adjustable for an exact working result
- Precise depth control by the roller or optional feeler wheels behind the harrow
- Precisely adjustable to all conditions through many tool combination options
- Precise adjustment to different soil conditions via the lower links - also possible while driving

## VERSATILE

- Versatile applications due to different tine combinations for grassland and arable farming
- Optional feeler wheels for perfect harrowing results when working without roller
- Easy removal of the roller
- Can be used with APV Pneumatic Seeders PS 300 M1 - PS 800 M1 with electric or hydraulic fan

## COMFORTABLE

- All adjustment positions are easily accessible, easy and comprehensible to operate
- Fine adjustment of the harrow intensity also possible via the lower links while driving
- Levelling plate adjustable with crank without effort
- Good accessibility to the seeder and all maintenance positions due to maintenance bar
- Manoeuvrable





## TECHNICAL DATA

Working width	6 m
Dimensions (folded) in m (HxWxD)	3.25 x 3.00 x 5.75
Weight (Toothed Ring Roller 410 mm)	4,800 kg
Tyres (transport wheels)	500/50-17"
Line spacing	75 mm (12 mm tines), 50 mm (8 mm tines)
Number of tines	80 pcs. (12 mm tines), 120 pcs. (8 mm tines)
Break	2-pipe air brake
Mounting category	CAT 3N
Tractor power	88 kW / 120 HP

⚠ Three double-acting control units are required for undercarriage, folding and roller adjustment

⚠ A single-acting control unit with a pressureless return is necessary when configured with a Pneumatic Seeder with hydraulic fan.

## SCOPE OF DELIVERY

- Brake axle with air brake and parking brake
- Tyres including mudguards and wheel chocks
- Warning signs and LED lighting
- Spring-mounted levelling plate
- Harrow sections with 2x 12 mm and 2x 8 mm tine rows (optionally configurable)
- Transport cover for tines
- Mechanical folding safety device
- Mechanical tine adjustment per row
- Hydraulic roller adjustment
- Toothed Ring Roller Ø 410 mm
- Tool compartment integrated in the frame

## APPLICATIONS



- Grassland maintenance and reseedling
- Grassland rehabilitation and renewal
- Regulation of weeds
- Stubble breaking and intercrop seeding in one operation
- Seedbed preparation
- Destruction of maize stubble after the silage maize harvest
- Seeding of different catch crops after harvesting a main crop (also on cereal or maize stubble)

For further additional equipment, please contact your APV sales representative!

## LEARN MORE!



Technical data provided without guarantee; errors and omissions reserved. All pictures are symbolic pictures. Photos: © APV, © Christian Postl

 APV - Technische Produkte GmbH  
 Zentrale: Dallein 15  
AT - 3753 Hötzelzdorf

Phone: +43 2913 8001  
office@apv.at  
www.apv.at