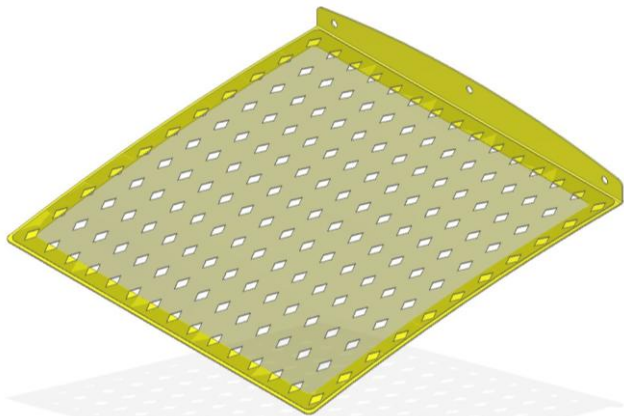


Modification instructions for filling screen

PS800 and PS1000 to 1600

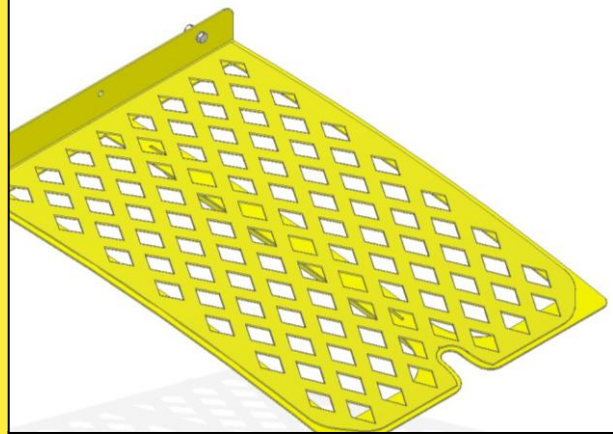
Filling screen2 PS800
Item no.: 04011-2-055



Content:

- 1 pc. Filling screen2 800L, RAL 1021
Item no.: 04011-4-060
- 2 pcs. Hexagon bolt with flange
Item no.: BN41200-M10x35
- 2 pcs. Flange nut
Item no.: BN6783-M10

Filling screen PS1000 to 1600
Item no.: 04049-2-000



Content:

- Filling screen PS1000, RAL 1021
Item no.: 04049-2-045
- 2 pcs. Hexagon bolt with flange
Item no.: BN41200-M10x35
- 2 pcs. Flange nut
Item no.: BN6783-M10

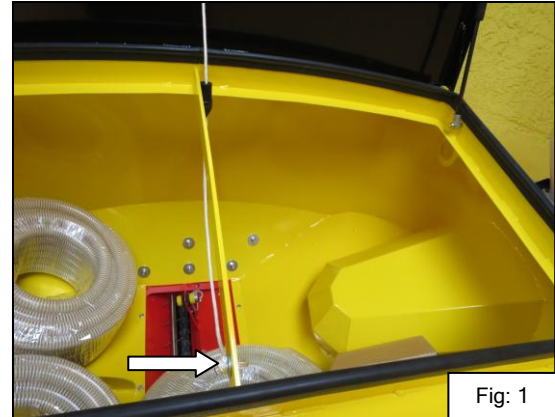


Version: 06/2016, V1.0

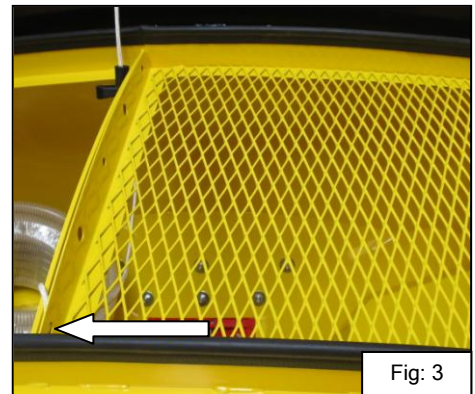
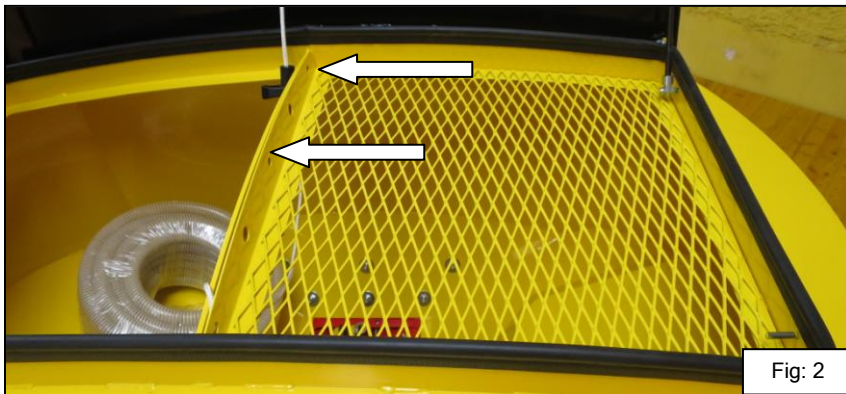
The conversion of the PS800 must be performed as follows:

1 Preparing the hopper opening for installation

- ✓ Open the cover and remove the retrieving rope from the cover on the hopper (Fig: 1).



2 Installing the filling screen

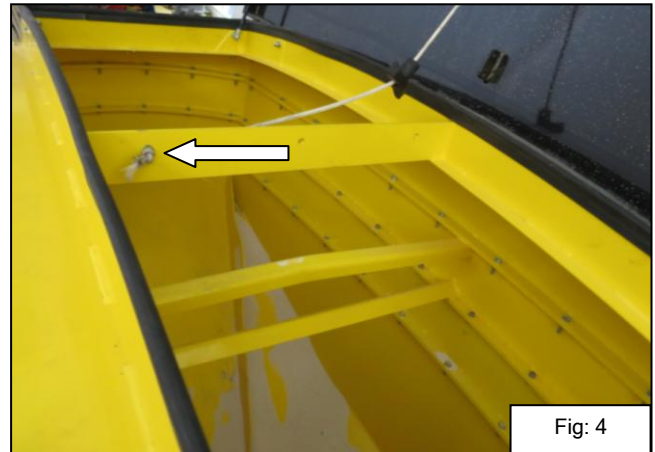


- ✓ One or two filling screens can be installed.
- ✓ The filling screen fits both on the left and on the right sides of the hopper (Fig.: 2).
- ✓ Fasten the filling screen with two bolts (Fig.: 2).
- ✓ In the third hole, reinstall the retrieving rope (Fig.: 3).

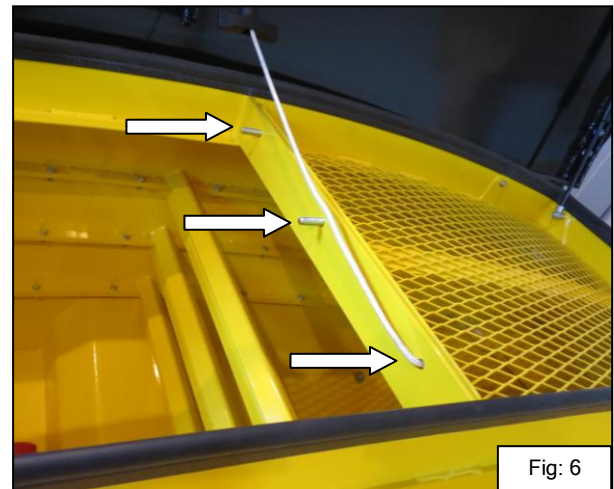
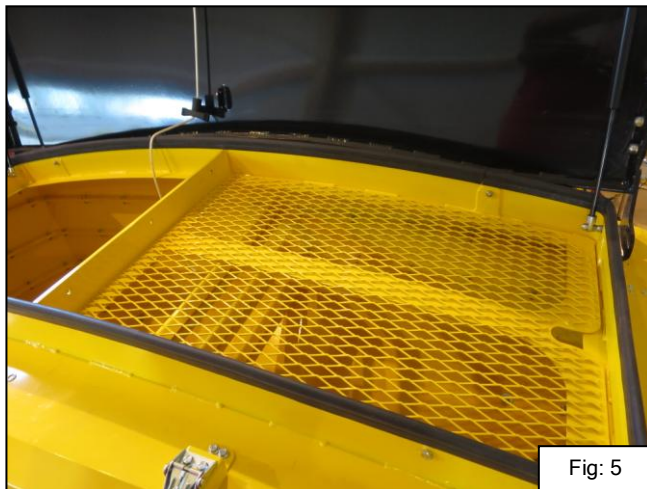
The conversion of the PS1000 to 1600 must be performed as follows:

3 Preparing the hopper opening for installation

- ✓ Open the cover and remove the retrieving rope from the cover on the hopper (Fig: 4).



4 Installing the filling screen



- ✓ One or two filling screens can be installed.
- ✓ The filling screen fits both on the left and on the right sides of the hopper (Fig.: 5).
- ✓ Fasten the filling screen with two bolts (Fig.: 6).
- ✓ In the third hole, reinstall the retrieving rope (Fig.: 6).

Quality for professionals

Inspired by farmers & realized by professionals



APV - Technische Produkte GmbH
Dallein 15
AT-3753 Hötzelndorf

Tel.: +43 (0)2913 8001
Fax: +43 (0)2913 8002

www.apv.at
office@apv.at